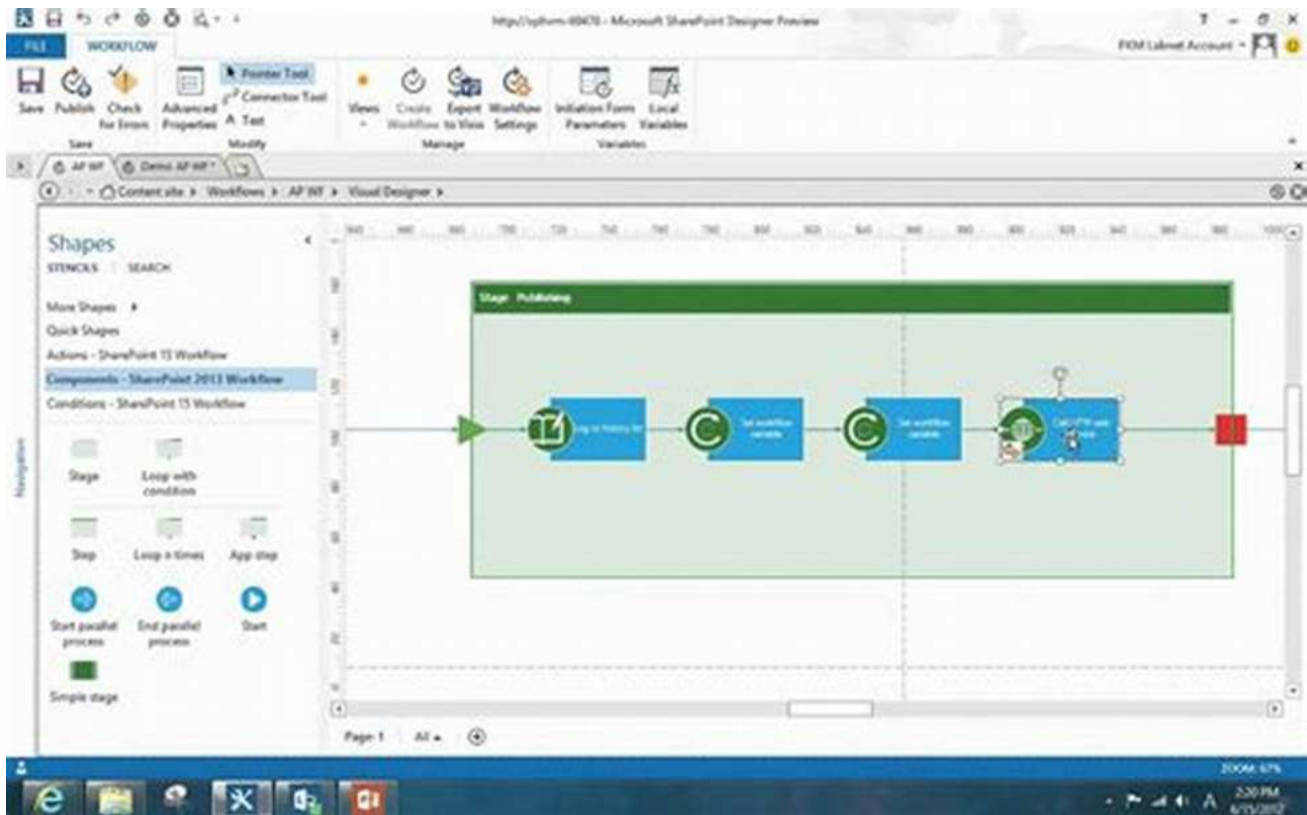


# Unlocking the Full Potential of Microsoft SharePoint 2013: Designing And Architecting Solutions for Enhanced Collaboration and Productivity

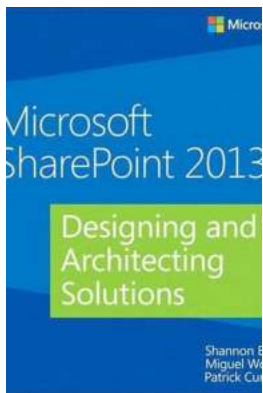


Are you looking to revolutionize your organization's collaboration capabilities? Look no further than Microsoft SharePoint 2013. With its powerful features and extensive customization options, SharePoint 2013 is the ultimate solution for designing and architecting robust collaboration solutions.

## Understanding SharePoint 2013

In today's fast-paced business environment, effective collaboration is crucial for success. SharePoint 2013 provides a comprehensive platform that enables

organizations to increase productivity, streamline workflows, and enhance communication and knowledge sharing within their teams.



## Microsoft SharePoint 2013 Designing and Architecting Solutions

by Shannon Bray (1st Edition, Kindle Edition)

★★★★☆ 4.3 out of 5

Language : English  
File size : 21567 KB  
Text-to-Speech : Enabled  
Screen Reader : Supported  
Enhanced typesetting : Enabled  
Print length : 850 pages



With SharePoint 2013, you can create intranet portals, team sites, document management systems, and much more. Its intuitive interface and seamless integration with other Microsoft products make it easy to collaborate, share information, and stay productive.

### Design and Architecture Best Practices

Designing and architecting SharePoint solutions requires careful planning and adherence to best practices. By following these guidelines, you can ensure a scalable and sustainable environment that meets the needs of your organization:

1. **Understand Your Organization's Requirements:** Before embarking on any SharePoint project, it is crucial to identify and understand the specific requirements of your organization. This includes determining the purpose, expected outcomes, and user needs.

2. **Create a Governance Plan:** Establishing a governance plan is vital to maintain control over your SharePoint environment. This includes defining roles and responsibilities, setting up permissions and access controls, and enforcing compliance with organizational policies.
3. **Information Architecture:** A well-designed information architecture is key to finding and organizing content efficiently. Utilize SharePoint's site hierarchy, metadata, and taxonomy features to create a logical structure that aligns with your organization's needs.
4. **User Experience (UX) Design:** Focus on creating an intuitive user experience that encourages adoption and engagement. Consider the usability, accessibility, and branding aspects while designing the user interface of SharePoint sites.
5. **Customization and Development:** SharePoint offers extensive customization capabilities, including creating custom workflows, web parts, and applications. Leverage these features judiciously to fulfill specific business requirements while minimizing overall complexity.
6. **Testing and Deployment:** Thoroughly test your SharePoint solutions before deploying them in a production environment. This includes stress testing, user acceptance testing, and verifying compatibility with various browsers and devices.

## **Maximizing SharePoint's Collaborative Features**

SharePoint 2013 comes with a plethora of collaborative features that can significantly enhance your organization's productivity and teamwork. Some key features include:

- **Document Libraries:** Efficiently store, manage, and share documents within your team or across the organization.
- **Social Features:** Foster communication and engagement through social networking features, such as newsfeeds, microblogging, and user profiles.
- **Enterprise Search:** Facilitate quick and accurate search across SharePoint sites, enabling users to find relevant information in seconds.
- **Workflows:** Automate business processes and streamline approvals, notifications, and task assignments using SharePoint's built-in workflow engine.
- **Business Intelligence:** Transform raw data into meaningful insights with SharePoint's powerful business intelligence tools, including dashboards and reports.
- **Integration with Microsoft Office:** Leverage the seamless integration with Microsoft Office applications, allowing users to create, edit, and collaborate on documents directly within SharePoint.

## Future-Proofing Your SharePoint Solutions

As technology continues to evolve, it is essential to future-proof your SharePoint solutions. Here are some strategies to ensure your solutions remain effective and relevant in the long run:

1. **Stay Up-to-Date:** Regularly update your SharePoint environment to the latest version, ensuring access to new features, bug fixes, and security patches.
2. **Monitor Performance:** Continuously monitor the performance of your SharePoint sites to identify and resolve any bottlenecks or issues that may

arise.

3. **Maintain Documentation:** Document your SharePoint deployments, configurations, and customizations to aid in troubleshooting and knowledge transfer.
4. **Implement Version Control:** Use version control to manage changes to custom code, templates, and configurations, ensuring proper governance and rollback options if needed.
5. **Stay Informed:** Keep up with the latest news, updates, and best practices in SharePoint by participating in forums, attending conferences, and staying connected with the SharePoint community.

Designing and architecting SharePoint 2013 solutions is a complex task, but the benefits to your organization are vast. By understanding your requirements, following best practices, and leveraging SharePoint's collaborative features, you can unlock the full potential of this powerful platform.

Remember to stay current with the latest updates and continuously monitor and maintain your SharePoint environment to ensure optimal performance. By doing so, you can future-proof your solutions and keep your organization at the forefront of collaboration and productivity.

[Learn More About Boosting Collaboration with SharePoint 2013](#)

## Microsoft SharePoint 2013 Designing and Architecting Solutions

by Shannon Bray (1st Edition, Kindle Edition)

★★★★☆ 4.3 out of 5

Language : English

File size : 21567 KB

Text-to-Speech : Enabled



Screen Reader : Supported  
Enhanced typesetting : Enabled  
Print length : 850 pages



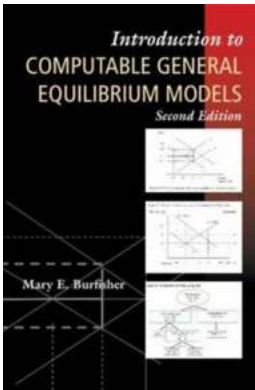
Get the information you need to make good SharePoint design decisions

Determine the best design for your SharePoint implementation by gaining a deeper understanding of how the platform works. Written by a team of SharePoint experts, this practical guide introduces the Microsoft SharePoint 2013 architecture, and walks you through design considerations for planning and building a custom SharePoint solution. It's ideal for IT professionals, whether or not you have experience with previous versions of SharePoint.

Discover how to:

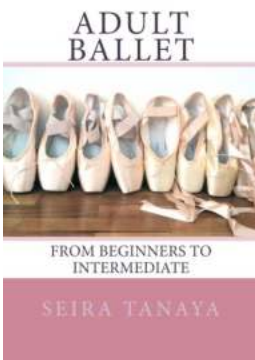
- Dive deeper into SharePoint 2013 architecture components
- Gather requirements for a solution that fits your needs
- Upgrade from Microsoft SharePoint 2010 to 2013
- Design service applications for performance and redundancy
- Provide the right storage plan for a SharePoint farm
- Map authentication and authorization requirements to your solution
- Take steps necessary to design a secure implementation

- Plan your business continuity management strategy
- Validate your SharePoint architecture to ensure success



## Welcome to the World of Computable General Equilibrium Models!

Skip navigation Understanding the Power of Economic Modeling Imagine being able to predict and analyze the potential outcomes of major economic decisions...



## Discover the Magic of Adult Ballet - From Beginners to Intermediate

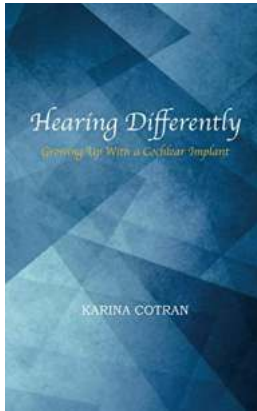
Have you ever dreamed of gracefully gliding across a stage, twirling in a beautiful tutu like a prima ballerina? Many adults think that ballet is only...



## How To Write Novel The Easy Way Using The Pulp Fiction Method To Write Better

Writing a novel can be a daunting task, especially for beginners. The endless possibilities and the pressure to create something unique and engaging can often become...





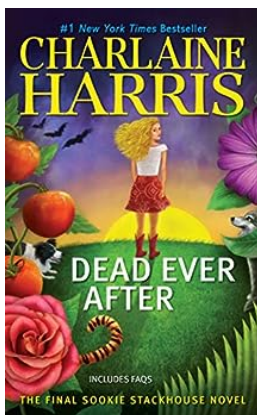
## Life-Changing Experiences: Growing Up With a Cochlear Implant

The Gift of Sound Imagine experiencing the world without sound. The laughter of friends, the melody of a favorite song, and the soft whisper of a loved one would...



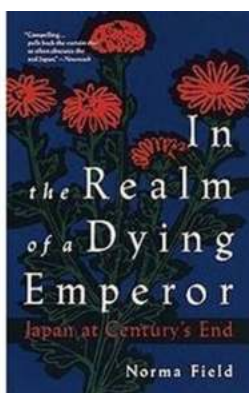
## Discover the Secrets of Microsoft Word 2013 Plain Simple: Your Ultimate Guide to Success

Are you tired of struggling with Microsoft Word 2013? Do you want to unlock its full potential and become a word processing wizard? Look no further! In this comprehensive...



## Dead Ever After Sookie Stackhouse 13 - The Epic Conclusion

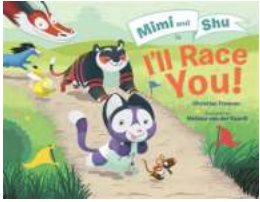
The Sookie Stackhouse Series has taken the literary world by storm. From vampires to werewolves, author Charlaïne Harris has created a compelling supernatural universe...



## Unveiling the Enigmatic World of Myths and Legends: In The Realm Of Dying Emperor

Step into the incomparable universe of In The Realm Of Dying Emperor, a mythical realm brimming with unparalleled wonders and captivating tales dating back centuries. In this...





## Mimi And Shu In LI Race You - An Exciting Adventure!

Are you ready for an adrenaline-pumping, heart-racing adventure with Mimi and Shu? Strap on your seatbelts and get ready for the ride of a lifetime! ...

[microsoft sharepoint designer 2013](#)

[microsoft sharepoint designer 2013 download](#)

[microsoft sharepoint designer 2013 service pack](#)

[microsoft sharepoint designer 2013 support](#)

[microsoft sharepoint designer 2013 configuration did not complete successfully](#)

[microsoft sharepoint designer 2013 end of life](#)

[microsoft sharepoint designer 2013 encountered an error during setup](#)

[microsoft sharepoint designer 2013 update](#)

[microsoft sharepoint designer 2013 picture manager](#)

[microsoft sharepoint designer 2013 \(64-bit\)](#)