

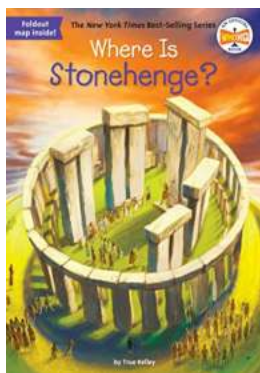
Where Is Stonehenge? The Enigmatic Wonder Hidden in the British Countryside



Stonehenge, a marvel of ancient engineering and an enduring symbol of mystery, has captivated the human imagination for centuries. This enigmatic prehistoric monument, located in the heart of Wiltshire, England, has left archaeologists, historians, and tourists puzzled about its purpose and significance. If you have ever wondered "Where is Stonehenge?," this article will take you on a journey to discover the secrets of its location, unravel its history, and explore the countless theories surrounding its purpose.

The Magnificence of Stonehenge's Location

Stonehenge stands proud on Salisbury Plain, a vast open area of grassland surrounded by rolling hills, about 8 miles north of Salisbury city. The monument itself occupies a prominent spot, creating an awe-inspiring landscape that has drawn people from all around the world.



Where Is Stonehenge? (Where Is?)

by Will Osborne (Kindle Edition)

★★★★☆ 4.8 out of 5

Language : English

Text-to-Speech : Enabled

Enhanced typesetting : Enabled

Word Wise : Enabled

File size : 54755 KB

Print length : 111 pages

Screen Reader : Supported



The exact reason for choosing this particular location for Stonehenge remains shrouded in mystery. However, experts believe that one of the reasons could be the presence of natural resources, specifically the abundance of sarsen stones and the bluestones in the nearby Preseli Hills in Wales. These stones were crucial in the construction of Stonehenge and might have influenced the decision to build it in close proximity.

Archeologists have also speculated that Stonehenge's location might have held spiritual significance for its builders. The alignment of the stone circle with the movements of the sun during the solstices suggests that the builders intended to create a celestial connection between the earthly and the divine.

The Historical Context of Stonehenge

Stonehenge dates back to approximately 3000 BCE and is believed to have been constructed in multiple phases over a period of 1500 years. The monument primarily consists of large standing stones arranged in a circular pattern. The purpose behind its creation, however, is still a subject of debate.

Several theories have emerged over the years. One prominent hypothesis suggests that Stonehenge served as an astronomical observatory, enabling ancient people to track celestial events such as equinoxes and solstices with remarkable accuracy. This theory is supported by the monument's alignment with celestial movements, as mentioned earlier.

Another theory proposes that Stonehenge was religious or ceremonial in nature. The presence of several burial mounds in the vicinity suggests that it could have been a burial site, possibly reserved for high-status individuals or leaders of the community. The imposing nature of the monument might have symbolized the power and authority of those buried there. However, these theories are not mutually exclusive, and Stonehenge may have served multiple purposes.

Unveiling the Secrets: Recent Discoveries Near Stonehenge

As ongoing research and excavations have continued to shed light on Stonehenge's mysteries, recent discoveries in the surrounding area have added new dimensions to our understanding of its purpose.

One such discovery is the Durrington Walls, located just 2 miles northeast of Stonehenge. This massive circular earthwork enclosed a settlement, possibly inhabited by the builders of Stonehenge themselves. The sheer size of Durrington Walls indicates a significant population that could have been responsible for the construction and maintenance of the monument.

Furthermore, recent ground-penetrating radar surveys have revealed the presence of buried stone circle formations near Stonehenge, previously unobserved by the naked eye. These findings suggest that Stonehenge's landscape was once filled with additional stone structures, creating a more complex and intricate ceremonial site.

The Allure of Stonehenge: A Magnet for Curiosity and Contemplation

Stonehenge's yesteryear charm continues to intrigue and fascinate people from all walks of life. Every year, thousands of visitors flock to this iconic site to witness its majestic beauty and ponder over its mysteries.

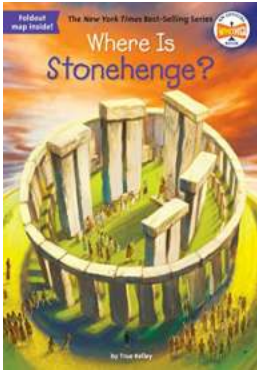
Exploring the vicinity of Stonehenge is an equally rewarding experience. The Stonehenge Landscape, comprising nearly 2,000 archaeological sites, offers insight into the practices, beliefs, and lives of its ancient inhabitants. From burial mounds and prehistoric monuments to ancient pathways, this landscape allows visitors to immerse themselves in an ever-evolving narrative of Britain's deep-rooted history.

The Quest for Answers Continues

The secrets of Stonehenge still linger, waiting to be unraveled. Despite the countless theories and recent discoveries, we are yet to uncover the full extent of its purpose and significance. Stonehenge remains a testament to the ingenuity of our ancestors and a symbol of the human desire to seek understanding in the face of bewildering mysteries.

So, the next time you find yourself asking, "Where is Stonehenge?" remember that its physical location is only one part of the larger enigma. Explore its

surroundings, read about its history, and let your imagination embark on a journey into the depths of human exploration and wonder.



Where Is Stonehenge? (Where Is?)

by Will Osborne (Kindle Edition)

★★★★☆ 4.8 out of 5

Language : English

Text-to-Speech : Enabled

Enhanced typesetting : Enabled

Word Wise : Enabled

File size : 54755 KB

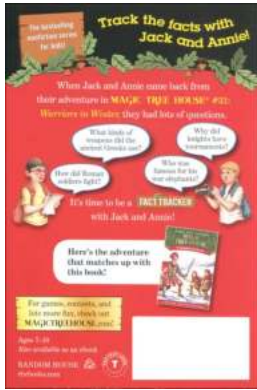
Print length : 111 pages

Screen Reader : Supported



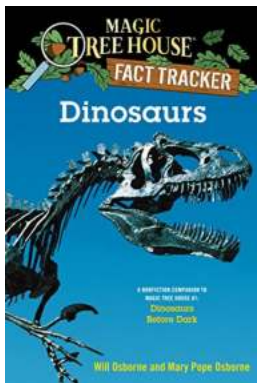
Unravel some of the riddles of Stonehenge, one of the most famous and mysterious monuments in the world!

Where is Stonehenge? That's an easy question to answer. It sits on the Salisbury Plain in Southern England. But what is the meaning of these strange circles of stones? Was Stonehenge a religious site to honor the dead? Or a sacred place of healing? Or perhaps an astrological calendar? These are much harder questions to answer. However, in an engaging and easy-to-read account, True Kelley puts forth all theories—past as well as current ones—about Stonehenge and the people who four thousand years ago managed to build this amazing monument.



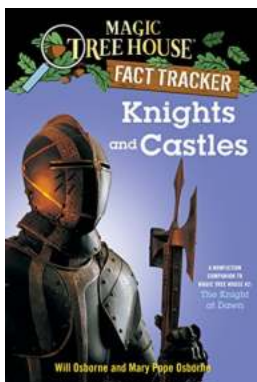
Unveiling the Fascinating Nonfiction Companion To Magic Tree House

Step right into a world where imagination meets education, as we explore the captivating nonfiction companion to the beloved Magic Tree House series. Embark on a journey...



The Ultimate Adventure: Dinosaurs Before Dark Magic Tree House

Are you excited to dive into a captivating world full of adventure, magic, and dinosaurs? Look no further, as we bring you the enchanting tale of "Dinosaurs Before..."



Nonfiction Companion To Magic Tree House - Unveiling the Secrets of the Series

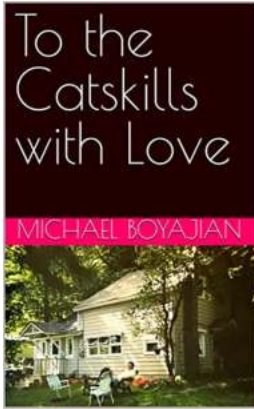
Over the years, the Magic Tree House series has captivated young readers with its delightful stories filled with adventure, history, and magic. However,...

FLOWERS, FAITH,
FINDING YOUR WAY
...AND OTHER F WORDS.

Flowers, Faith, Finding Your Way And Other Words: Unlocking the Mysteries of Nature's Beauty

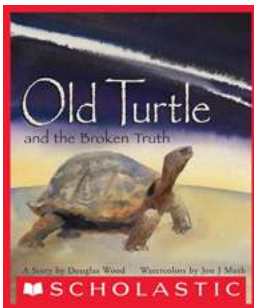
Flowers have a remarkable power to capture our attention and bring beauty into our lives. Their vibrant colors, delicate petals, and intoxicating scents create an enchanting...





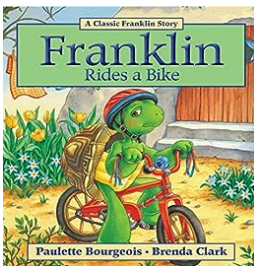
To The Catskills With Love - Exploring the Scenic Beauty

The Catskills, located in southeastern New York state, have long been a beloved destination for nature enthusiasts, adventure seekers, and those looking for a...



Discover the Enlightening Tale of "Old Turtle And The Broken Truth"

Have you ever wondered about the mysteries of life and the truth that lies within it? "Old Turtle And The Broken Truth" is a captivating story that will not only...



The Unforgettable Franklin Rides Bike Classic: Unveiling Stories 16

Franklin Rides Bike Classic is a unique event that takes participants on a mesmerizing journey through Franklin's stories. It gives people an opportunity to explore the rich...



Price Forecasting Models For Rollins Inc (ROL) Stock: Insights on 500 Companies By Weight

Investing in the stock market can be a daunting task, especially when it comes to predicting the future price movements of individual stocks. However, with the development...